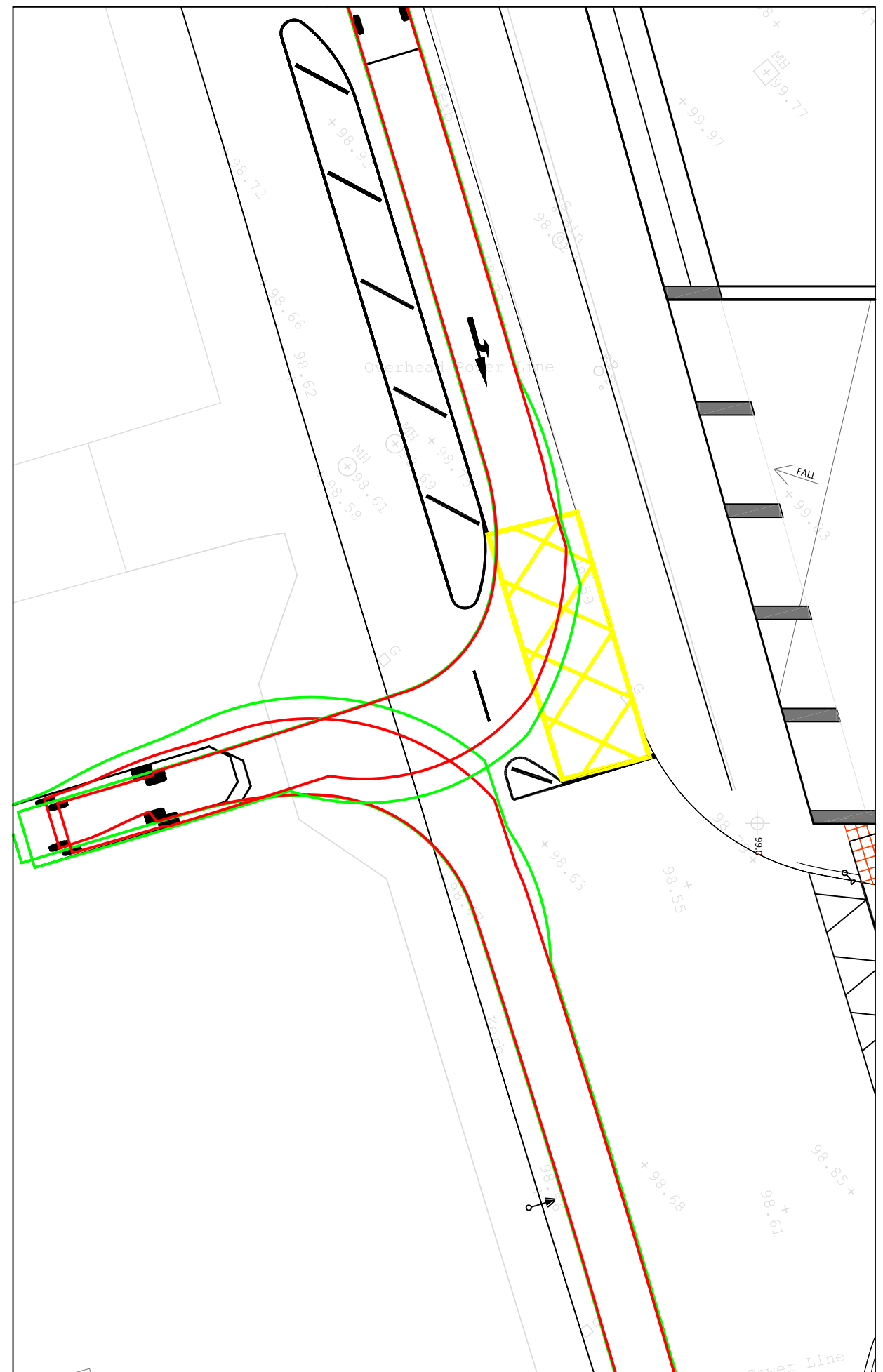


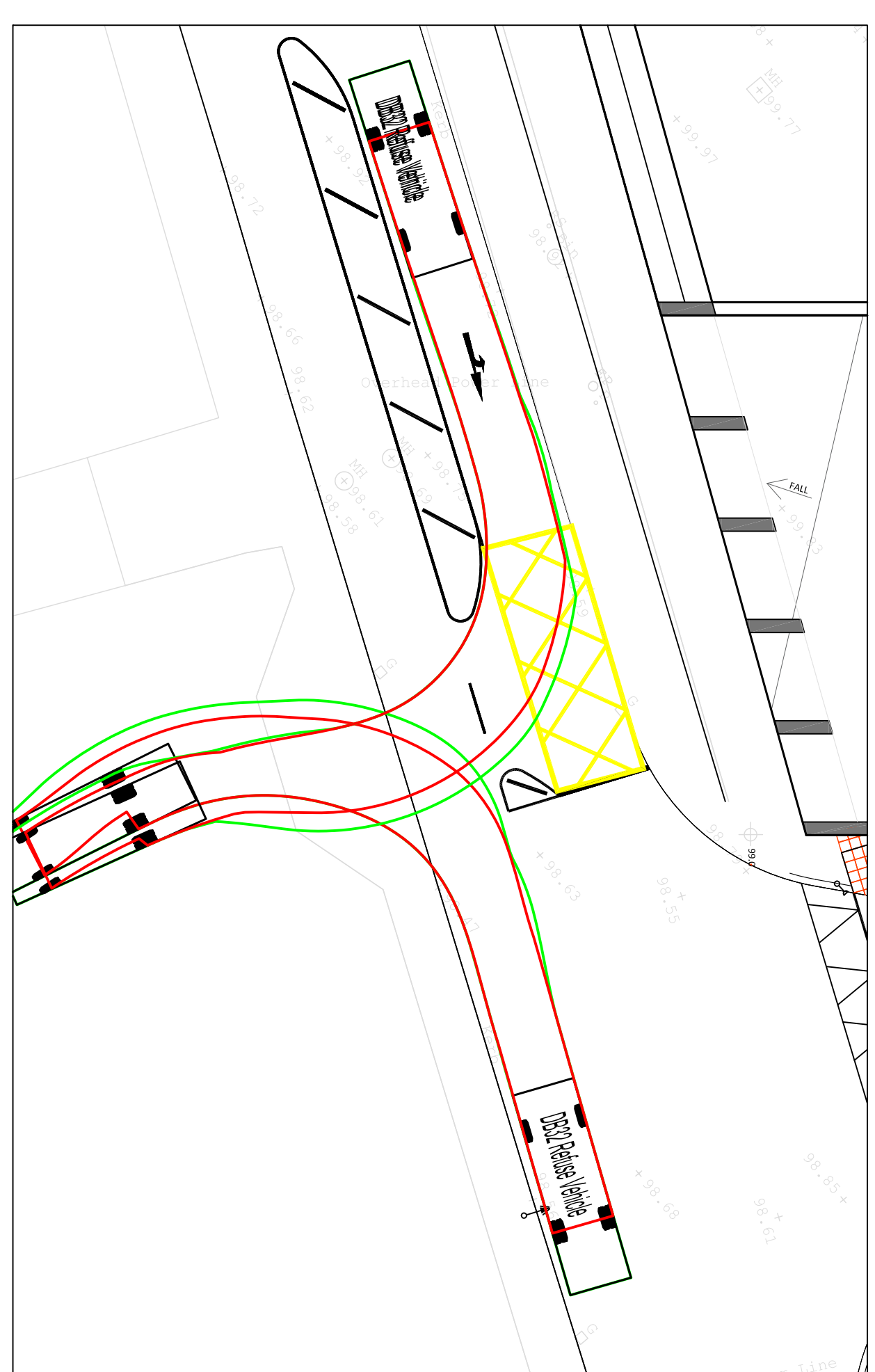
NOTES

1. THIS DRAWING IS TO BE READ IN CONJUNCTION WITH THE SPECIFICATIONS AND ALL RELEVANT ARCHITECTS AND SERVICES.
2. DO NOT SCALE. USE FIGURED DIMENSIONS ONLY.
3. ALL LEVELS TO BE CHECKED ON SITE BY THE CONTRACTOR AND ANY PRIOR TO CONSTRUCTION SHALL BE REPORTED TO THE ENGINEER.
4. ALL LEVELS ARE TO ORDNANCE DATUM MAIN HEAD.

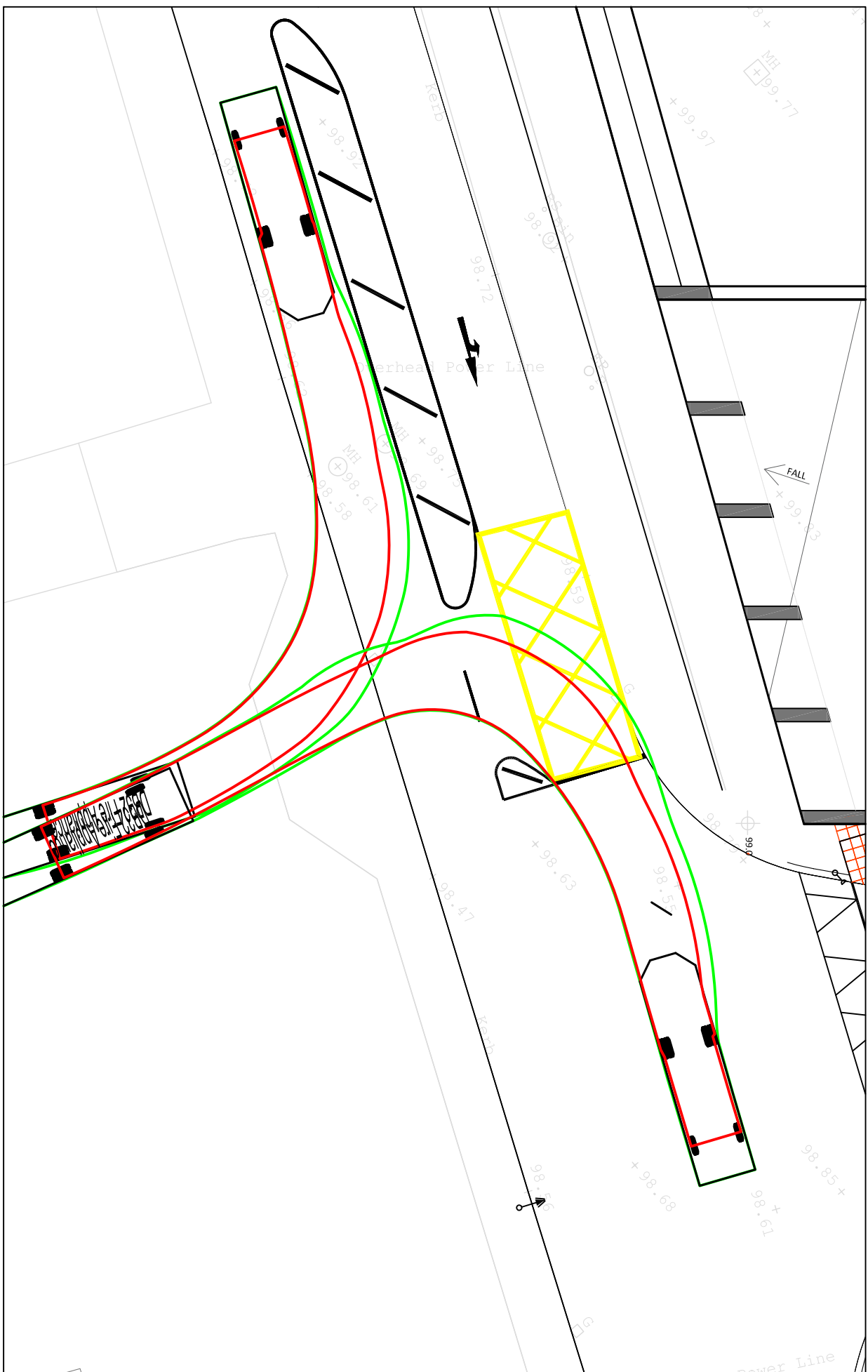
- LEGEND**
- VEHICLE WHEEL TRACKING
 - VEHICLE BODY TRACKING



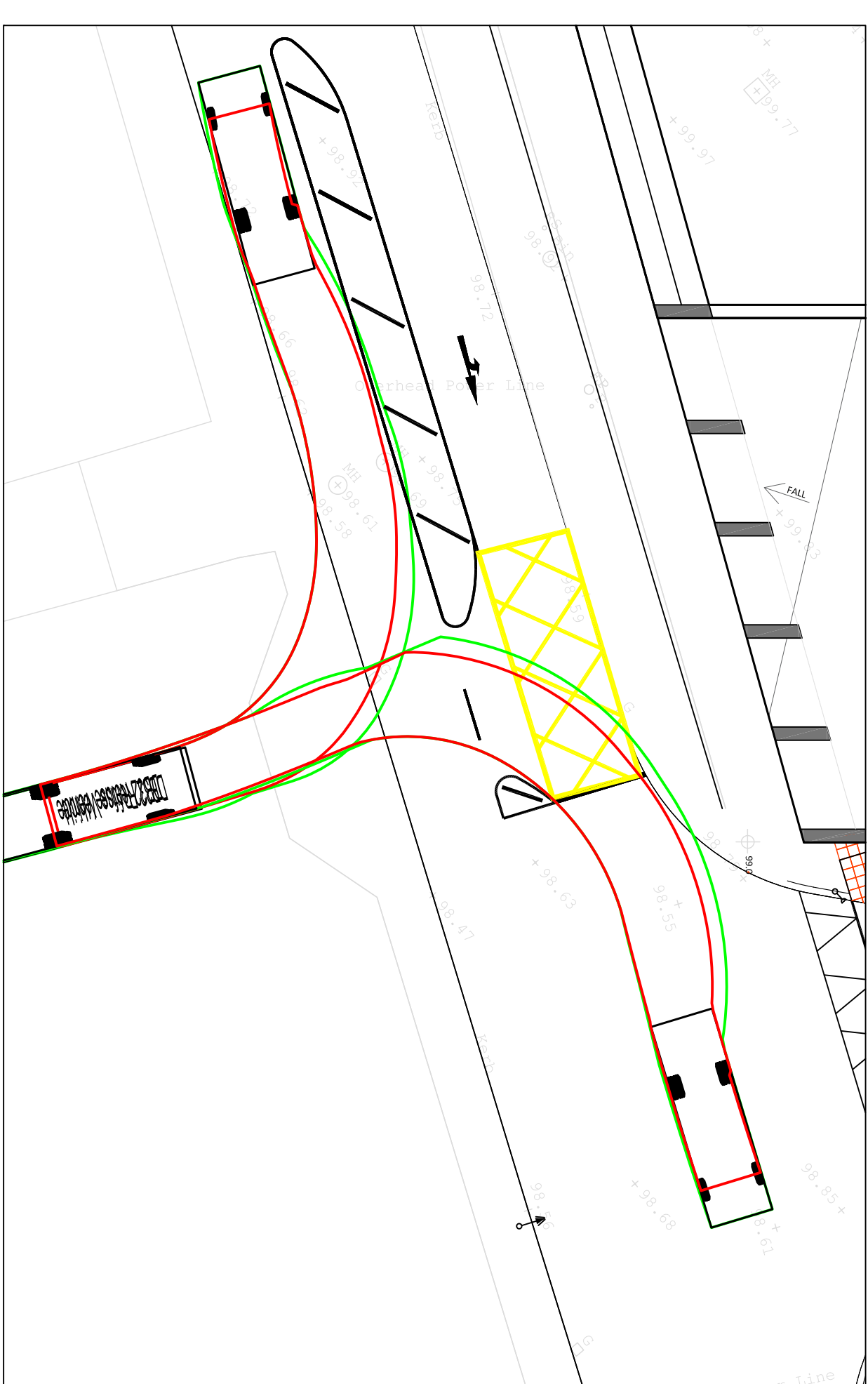
FIRE TENDER ENTERING TUS NUA RESOURCE CENTRE SITE
(SCALE 1:200)



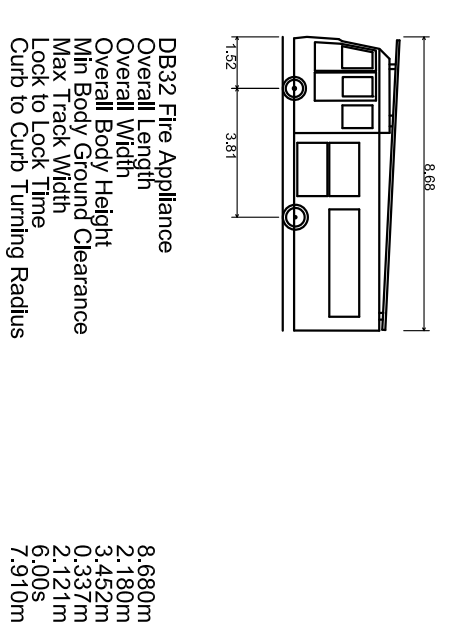
REFUSE VEHICLE ENTERING TUS NUA RESOURCE CENTRE SITE
(SCALE 1:200)



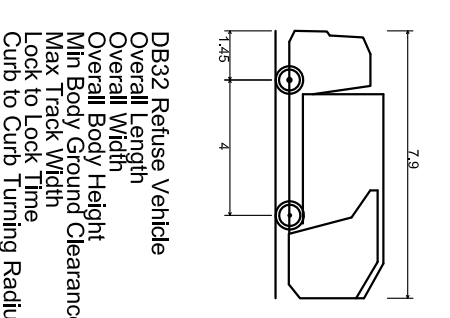
FIRE TENDER EXITING TUS NUA RESOURCE CENTRE SITE
(SCALE 1:200)



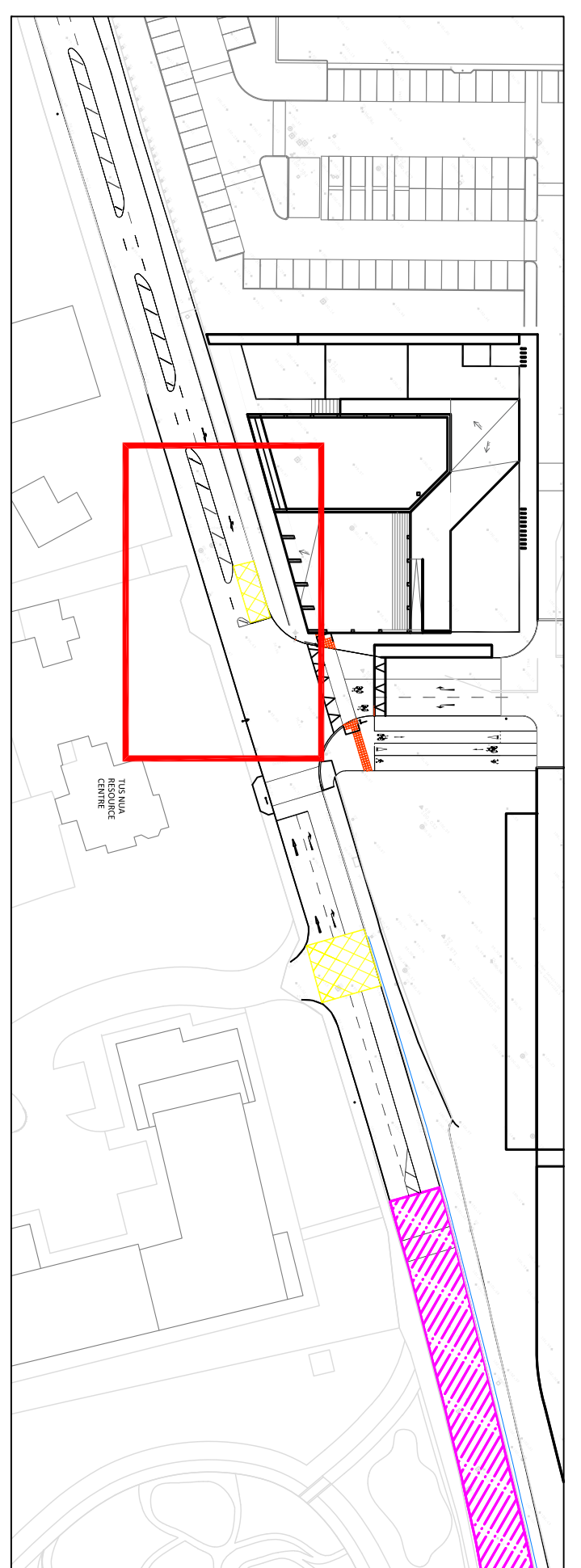
REFUSE VEHICLE EXITING TUS NUA RESOURCE CENTRE SITE
(SCALE 1:200)



PR92 Fire Appliance
 Overall Length 8.60m
 Overall Width 3.180m
 Max Body Height 2.130m
 Max Track Width 0.337m
 Max Track Width 6.124m
 Curb to Curb Turning Radius 7.910m



D632 Refuse Vehicle
 Overall Length 7.900m
 Overall Width 2.400m
 Max Body Height 3.180m
 Max Track Width 2.400m
 Curb to Curb Turning Radius 9.525m



KEY PLAN OF HOSPITAL STREET
(SCALE 1:1000)

REV	DATE	DESCRIPTION	BY	CHKD
A	15/03/18	TRANSPORT/VEHICLE TRACKING	JC	JN
		REVISIONS	DWG	APP

GARLAND
 0 URBAN L L M E R I C K WATERFORD INTERNATIONAL
 11, 12 & 13 BUCKLE STREET WATERFORD, CO. WATKINS
 E: info@garlandinternational.com W: www.garlandinternational.com

PROJECT: RESIDENTIAL AND NEIGHBOURHOOD CENTRE DEVELOPMENT (PHASE 1)
 TITLE: HOSPITAL STREET VEHICLE TRACKING

STATUS: **PLANNING APPLICATION**
 DRAWN: JC DES: BT/JN
 CHK: JN APP: BT/KR
 DATE: 11/01/18 JOB NO.
 A SCALE: 1:200

DRG. NO. **039**
R1831
 REV. A